



INSTRUCTIONS

THE TRIMPRO UNPLUGGED IS DESIGNED TO BE USED WITH FRESHLY HARVESTED PLANTS.

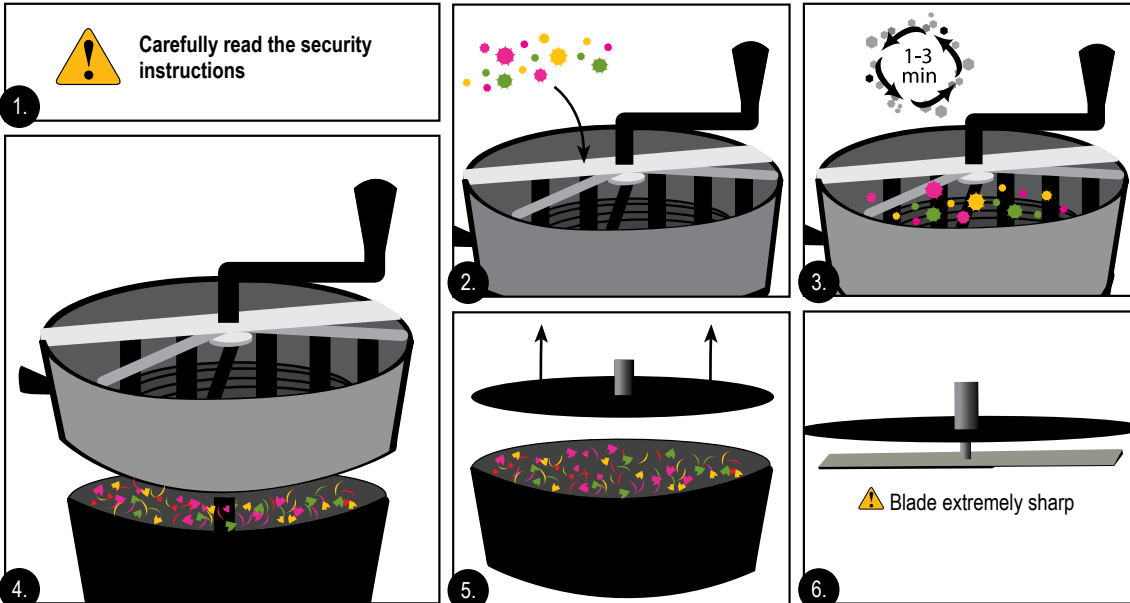
MACHINE ASSEMBLY

Your Trimpro Unplugged comes assembled except for the following:

- i. Attach the turning handle by sliding it into the shaft and tightening the set screw with the Allan Key provided.
Note: make sure the top of the shaft is flush with the top of the handle.
- ii. Attach the gripping handle onto the side of the upper cylinder

USER INSTRUCTIONS

1. Carefully read the safety instructions (see warnings ⚠) before using the Unplugged.
2. Place 2-3 handfuls of freshly harvested plants without branches into the upper container.
3. Turn the handle either direction for 1 to 3 minutes or until the desired cut is obtained.
4. Lift off upper cylinder to remove trimmed plants.
5. Remove the gearbox/grate assembly to access the trimmed plant material.
6. **CAUTION** ⚠ Blade is extremely sharp. Avoid contact



MAINTENANCE

In order to facilitate the trimming, clean both sides of the grate and blades frequently with isopropyl alcohol on a cloth. Sharpen the blade when necessary. See sharpening instructions below.

ADJUSTMENT OF THE BLADES HEIGHT:

To adjust the height of the blade, follow these steps:

- A. Carefully remove the grate and turn it upside down.
- B. **CAUTION** ⚠ The blade is extremely sharp.
- C. Using the Allan Key provided, loosen the set screw on the chrome collar.
- D. Remove the chrome collar.
- E. Carefully remove the blade from the shaft.
- F. Add one more spacer (provided).
- G. Replace the blade on the shaft with the beveled edge facing away from the grate.
- H. Replace the chrome collar on the shaft
- I. **CAUTION** ⚠ Do not push the chrome collar downward as this will cause the rotation of the handle to be stiff.
- J. Tighten the set screw on the chrome collar with the Allen Key.

SHARPENING THE BLADE

1. Follow steps A to E above to remove the blade.
2. Clean the blade with isopropyl alcohol on a cloth.
3. Use a grinding stone to sharpen the blade on both cutting edges.
4. If you are uncertain on how to use a grinding stone, seek professional help.
5. Follow steps G to J above to replace the blade.

FOR INFORMATION OR TO ORDER:

VISIT: WWW.TRIMPRO.COM • Contact: info@trimpro.com • Call (Canada): 1-450-349-0811 • Toll free in North America: 1-844-TRIMPRO

Patents: CAN: 2,470,370 • USA : 7,168,643 • EUR: 1,662,858 B1 • AUSTRALIA: 2004269786 CE standard